

 **accento**

Fabrics / Tissus / Stoffe/ Tessuti



Category A

Amsterdam	pag. 3
Bombay	pag. 4
Inca	pag. 5
Magnum	pag. 6
Angel ,	pag. 7
Velvety,	pag. 8
Grisù	pag. 9
Avantagarde	pag. 10

=====



Category B

Lani	pag. 11
Ponza	pag. 12
Woolland	pag. 13
Sole	pag. 14
Crash	pag. 15
Spifire	pag. 16



Reviva Hero/Iris	pag. 17-18
------------------	------------



Wilson	pag. 19
--------	---------



Scarlet	pag. 20
---------	---------

=====

Real Leather

Soft Unito	pag. 21
Savoy	pag. 22

CATEGORY A



Crib 5

Amsterdam FR

DIN EN 1021-2

BS 5852 Source 1

BS 5852 Source 5 / Crib 5


UNI 9175 2010 CLASSE 1.IM

Composition 100% Polyester

Width 140 cm +/-2%

Weight 550 gr/m2 +/-5%

Category **Contract, Upholstery**

Usage  

Treatment 

Care     



ABRASION RESISTANCE >100.000



<https://www.mercis.si/product/amsterdam-fr/>

CATEGORY A



Crib 5

Bombay FR

EN 1021-2

BS 5852 Source 1

BS 5852 Source 5 / Crib 5

UNI 9175 2010 CLASSE 1.IM

Composition	Surface/Back: 100% Polyester/100% Polyester
Width	140 cm +/-2%
Weight	350 gr/m2 +/-5%
Category	Contract, Plain, Upholstery
Usage	
Treatment	
Care	



ABRASION RESISTANCE >100.000



<https://www.mercis.si/product/bombay-fr/>

CATEGORY A



INCA

features

88% pvc - 6% polyester - 6% cotton

width

cm ± 140

weight

± 650 g/m²

thickness

± 0,95 mm

roll length

approx. 30 lm.

abrasion resistance

> 100.000 rubs, ISO 5470-2

fastness to rubbing

dry 4, wet 4, ISO 105 X12.

tensile strength

warp > 300 N/5 cm, weft > 200 N/5 cm, ISO 1421

sustainability

phthalate free

fire resistance

1IM - UNI 9175

EN 1021:14 part 1/2

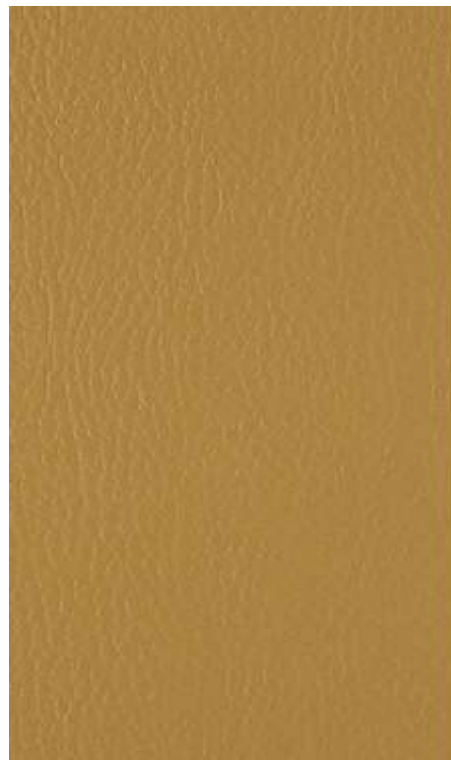
BS 5852:06 part 1, is 1

NF-P 92 503 - M2

California TB 117:2013

IMO MED - Ftp 307 part 8

ONOM B 3825 - schwer brennbar.



Inca, a fire-retardant and resistant imitation leather that is suitable for any contract use as it is stretchy and pleasant to the touch. It comes in a range of 70 different colours.



<https://abiteu.eu/en/inca/61/prdd.php>

CATEGORY A



MAGNUM

features

88% pvc - 7% polyester - 4% cotton
- 1% polyurethane/polycarbonate

width

cm ± 140

weight

± 715 g/m²

thickness

± 1,10 mm

roll length

approx. 30 lm.

abrasion resistance

> 200.000 rubs, ISO 5470-2

sustainability

phthalate free

fire resistance

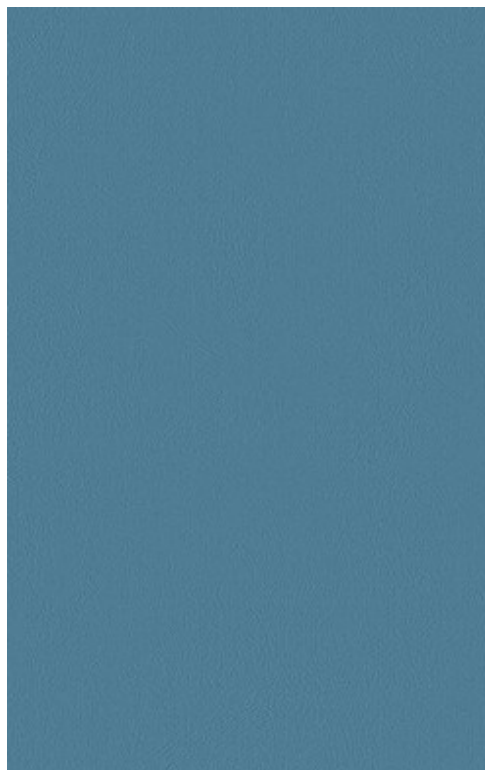
1IM - UNI 9175
EN 1021 1/2
BS 5852 part 1
California TB 117-2013
IMO FTP Code 307 part 8
ÖNOM B 3825 - schwer brennbar.

only on request

BS 5852 crib 5
DIN 4102 B1
NF P 92 507 M1

attention

slight colour differences between different batches are allowed, we assume no responsibility for the transfer of colour/pigment caused by clothing and accessories



A product with hundreds of qualities: excellent cleanability, antimicrobial and antibacterial, stretchy, non-toxic, excellent scratch and tear-resistance, fire-retardant, phthalate-free, made in Italy and comes in 62 different colours.



<https://abitex.eu/en/magnum-fire-retardant-vinyl-vinyl-magnum-phthalate-free/65/prdd.php>

CATEGORY A



Crib 5

ANGEL

features

100% polypropylene

width

cm \pm 140

weight

\pm 228 g/m²

dyeing

solution dyed product

roll length

approx. 35 lm.

abrasion resistance

> 100.000 rubs, ISO 12947-2

fastness to rubbing

dry 5, wet 4/5, ISO 105 X12

seam slippage

warp 3 mm, weft 4 mm, ISO 13936-2

pilling

5, ISO 12945-2

fire resistance

11M - UNI 9175

EN 1021:14 part 1/2

BS 5852:06 crib 5

California TB 117:2013

IMO MED - Ftp 307 part 8

attention

slight colour differences between different batches are allowed we assume no responsibility for the transfer of colour/pigment caused by clothing and accessories



<https://abitex.eu/en/angel-fire-retardant-fabric-fabric-angel-fire-retardant-yarn/32/prdd.php>

CATEGORY A



Crib 5

velvety

features

100% polyester.

width

cm \pm 150; upon request available in 300 cm width (only rolls).

weight

\pm 320 gr/m².

dyeing

piece dyed product.

roll length

approx. 30 lm., can also be cut-to-length at an extra cost.

abrasion resistance

> 50.000 rubs, ISO 12947-2.

fastness to rubbing

dry 5, wet 4, ISO 105 X12.

seam slippage

warp 3 mm, weft 3 mm, ISO 13936-2.

pilling

5, ISO 12945-2.

sound absorption

α_w 0,65 folded;
 α_w 0,55 not folded;
ISO 354 - G-100 type.

fire resistance

1IM - UNI 9175;
classe 1 - UNI 9177;
class 1 - EN 13773;
EN 1021 part 1/2;
BS EN 1021 part 1/2;
BS 7176 + A1 medium hazard;
BS 5852 crib 5;
BS 5867 part 2 type B;
BS 5867 part 2 type C;
NF-P 92 503 - M1;
NF D60-013 (AM18);
DIN 4102 - B1;
NFPA 701;
NFPA 260 Class 1;
California TB 117:2013;
IMO MED 3.20 - Ftp 307 part 8;
IMO MED 3.19 - Ftp 307 part 7;
ÖNOM B 3825 - schwer brennbar.



<https://abitex.eu/en/velvety/112/prdd.php>

CATEGORY A



grisu' _Frisé

features

68% polyester, 32% polypropylene.

width

± 140 cm.

weight

± 400 g/m².

dyeing

solution dyed warp and yarn dyed weft.

roll length

aprox. 35 lm, can also be cut-to-length at an extra cost.

abrasion resistance

> 135.000 rubs, ISO 12947-2.

color fastness to light

> 6, ISO 105 B02.

seam slippage

warp 3 mm, weft 3 mm, ISO 13936-2.

pilling

4/5, ISO 12945-2.

sound absorption

α_w 0,75 folded;
α_w 0,60 not folded;
ISO 354 - G type.

fire resistance

1IM - UNI 9175;
classe 1 - UNI 9177;
EN 1021 part 1/2;
NF D-60 013 - A18;
DIN 4102 - B1;
NFPA 260 Class 1;
California TB 117:2013;
IMO MED 3.20 - Ftp 307 part 8;
ÖNOM B 3825 - normal brennbar.



<https://abitex.eu/en/grisu-fire-retardant-frise-fabric-fabric-grisu-is-produced-with-fire-retardant-yarn/90/prdd.php>

CATEGORY A



fireproof



imo-med



sound
absorbent



eco-friendly



avantgarde

features

68% pvc - 1% polyurethane - 31% cotton.

width

cm \pm 140.

weight

\pm 630 gr/m².

thickness

\pm 1,0 mm.

roll length

approx. 25 lm, can also be cut-to-length at an extra cost.

abrasion resistance

> 50.000 rubs, ISO 5470-2.

color fastness to light

5/6, ISO 105 B02.

fastness to rubbing

dry 4, wet 4, ISO 105 X12.

tensile strength

warp 550 N, weft 435 N, ISO 1241.

sustainability

phthalate free.

fire resistance

1IM - UNI 9175;
EN 1021 part 1/2;
BS 5852 part 1, is 0 and 1;
BS 5852 crib 5;
California TB 117:2013;
IMO MED - Ftp 307 part 8.



<https://abitex.eu/en/avantgarde/56/prdd.php>

CATEGORY B



OEKO-TEX®
CONFIDENCE IN TEXTILES
STANDARD 100
510-0100 HOHENSTEIN HTTI
Tested for harmful substances.
www.oeko-tex.com/standard100



lani

description

**tough, felted wool quality in modern
applicable colours**

composition

80% wool / 20% polyamide

width

± 140 cm, ± 55 inches

weight

± 640 gr/m¹, ± 21 oz/yd¹

flame retardancy

EN 1021/ 1-2

BS 5852, crib 5 with FR finish

DIN 4102, B2 with FR finish

UNI VF 9175, classe 1 IM

Cal TB 117

NFPA 260, class 1

IMO 2010 FTP part 8

NF D 60-013 - AM18



<https://www.vescom.com/en/dessin/lani?c=6978>

CATEGORY B



Crib 5

ponza

composition

100% flame retardant polyester

width

± 140 cm, ± 55 inches

weight

± 850 gr/m², ± 27 oz/yd² fabrics

flame retardancy

EN 1021/1-2

NF P 92/503-507, M1

DIN 4102, B1

UNI 9175, classe 1 IM

IMO 2010 FTP part 8

BS 5852, crib 5

NFPA 260, class 1

Cal TB 117

abrasion

ISO 12947-2

100.000 rubs martindale

ASTM D4157

100.000 double rubs wyzenbeek

pilling

ISO 12945-2

3 (scale 1-5)

ASTM D3511

3 (scale 1-5)

colorfastness to light

ISO 105-B02

5 (scale 1-8)

AATCC 16.3: 40 hours

4 (scale 1-5)

seam slippage

ISO 13936 - 2

warp 6 mm / weft 6 mm

ASTM D4034

warp 103 lbs / weft 101 lbs

breaking strength

ASTM D5034

warp 282 lbs / weft 185 lbs

care



shrinkage: warp -1.6% / weft -0.5%



shrinkage: warp -2.0% / weft -0.5%



<https://www.vescom.com/en/dessin/ponza>

CATEGORY B



DIN EN 1021-1 / -2
BS 5852 Source 0 / 1
UNI 9175-2010 CLASSE 1.IM

Woolland

Composition	70% Recycled Wool, 30% Polyamide
Width	150 cm +/-2%
Weight	400 gr/m2 +/-5%
Category	Contract, Plain, Upholstery
Usage	
Treatment	
Care	



ABRASION RESISTANCE >100.000



<https://www.mercis.si/product/woolland/>

CATEGORY B



SOLE CS

Composition
100% Trevira CS

Width
Ca. 140 cm

Weight
525 g/m² (+/- 5%)

Abrasion resistance
50.000 Martindale cycles
(EN ISO 12947-2)

Pilling
4/5 (EN ISO 12945-2)

Flammability
UNI 9177 - Classe 1
NFP 92-503-507 M1
California TB 117:2013
EN 1021-1 & 2
BS 5852-Part 0-1 (C&M)
DIN 4102 B1
UNI 9175 - 1.IM
NFPA 260:2013
IMO MSC 307(88) Annex 1 Part 7-8

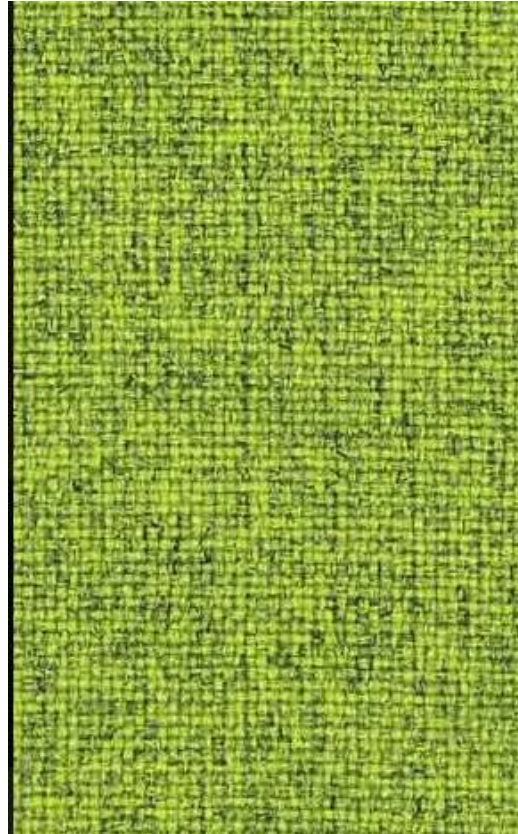
Sound absorption
UNI EN ISO 354:2003 w : 0,60

Light fastness
5 (EN ISO 105-B02)

Light fastness
5 (EN ISO 105-B02)

Fastness to rubbing
Wet 4/5; Dry 4/5 (EN ISO 105X12)

Cleaning
Wet cleaning warp
Please see the ISO symbols
Shrinkage app. 2,5%

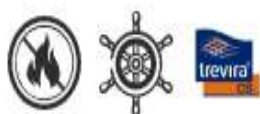


<https://www.onemariosirtori.com/sole-cs>

CATEGORY B

CRASH

Velvet with a **wrinkled effect**, Crash is the result of finishing research, giving it a unique and exclusive look. Made from **Trevira Cs yarns**, it is ideal for the hospitality sector in upholstery and curtains. Coordinated with the Spitfire item.



Crib 5



HEIGHT	49,2 inches +/- 2%
COMPOSITION	100% PL TREVIRA CS
WEIGHT	314 g/mq
MARTINDALE	> 100.000 cycles
LENGTH PIECES	131,2 mtl approx.
PURPOSE	Curtains, Decoration, Heavy-duty coating, Lightweight coating
CERTIFICATIONS	B1 (D), BS (GB), CAL. TEST, Classe 1 (IT), CRIB 5, FTP (IMO)
WASHING	



<https://www.alessandrobini.com/en/alessandro-bini-tessuti-ditalia-en/products/crash/>

CATEGORY B






SPITFIRE

Spitfire is a flame retardant velvet that reproduces exactly the effect of cotton velvet. A bestseller from the Tessuti d'Italia sample book. Made from **Trevira CS yarn**, it is suitable for the most important international flame retardant certifications. It is available in a wide colour palette, from the most classic to the most trendy colours.



Crib 5



HEIGHT	55,2 inches +/- 1%
COMPOSITION	100% PL TREVIRA CS
WEIGHT	314 g/mq
MARTINDALE	> 100.000 cycles
LENGTH PIECES	131,2 mtl approx.
PURPOSE	Curtains, Decoration, Heavy-duty coating, Lightweight coating
CERTIFICATIONS	B1 (D), BS (GB), CAL. TEST, Classe 1 (IT), CRIB 5, FTP (IMO), M1 (FR)
WASHING	    



<https://www.alessandrobini.com/en/alessandro-bini-tessuti-ditalia-en/products/spitfire/>

CATEGORY B



Crib 5



THE USE OF RECYCLED POLYESTER, WHICH REQUIRES FEWER PROCESSING STEPS, MEANS THAT WE USE LESS ENERGY DURING THE PRODUCTION PROCESS, RESULTING IN A CONSIDERABLE REDUCTION OF TOXIC CARBON EMISSIONS; THE YARN THAT COMPOSES REVIVA IS FULLY TRACEABLE: APART FROM INSTITUTIONAL CERTIFICATIONS (GRS, TC, LCA, OEKOTEX) IT CONTAINS AN INSIDE MARKER PUT DURING THE SPINNI PROCESS, THAT ALLOWS TO DETECT NEWLIFE™ PRESENCE 'TILL THE FINISHED GARMENT.

RaDa®
fabrics to live.

collezione collection		REVIVA HERO	
Cod.	08221.001	composizione composition	100%PET (recyc.)
		altezza width	140 cm
		peso / weight (+/-5%)	585 g/m

TEST	Norma/method	Valori/Results	Scala/grade
Solidità dei colori / Colour fastness			
alle intemperie / to artificial weathering	EN ISO 105-B04	7	blu 1-8
allo sfregamento a secco/ to dry rubbing	EN ISO 105-X12	4/5	grigi 1-5
allo sfregamento a umido/ to wet rubbing	EN ISO 105-X12	4	grigi 1-5
all'acqua di mare / to saline water	EN ISO 105-E02	4-5	grigi 1-5
all'acqua clorata / to chlorinated water	EN ISO 105-E03	4-5	grigi 1-5
Calo / Shrinkage			
al lavaggio in lavatrice / to machine washing	EN ISO 6330	ordito / length ± 0	trama / width ± 0 %
Proprietà del tessuto/ Physical properties			
scorrimento dei fili sulle cuciture/seam slippage	EN ISO 13936-2	ordito / length 3	trama / width 4 mm
resistenza al pilling/pilling resistance	EN ISO 12945-2	4/5	
resistenza all'abrasione/abrasion resistance	EN ISO 12947-2	>100.000	End point cicli / cycles

Reazione al fuoco / Reaction to fire – PASS
Classe 1 IM – UNI 9175
EN 1021-1+2
BS5852:2006 cig.+flame
California test (TB117 + AB2998)
IMO FTP Code 2010 - part 8
BS5852:2006 – Crib-5
NF P 92-504+507: M1 (France)



<https://revivatextile.com/collections/>

CATEGORY B



THE USE OF RECYCLED POLYESTER, WHICH REQUIRES FEWER PROCESSING STEPS, MEANS THAT WE USE LESS ENERGY DURING THE PRODUCTION PROCESS, RESULTING IN A CONSIDERABLE REDUCTION OF TOXIC CARBON EMISSIONS; THE YARN THAT COMPOSES REVIVA IS FULLY TRACEABLE: APART FROM INSTITUTIONAL CERTIFICATIONS (GRS, TC, LCA, OEKOTEX) IT CONTAINS AN INSIDE MARKER PUT DURING THE SPINNI PROCESS, THAT ALLOWS TO DETECT NEWLIFE™ PRESENCE 'TILL THE FINISHED GARMENT.

RaDa®
fabrics to live.

collezione
collection

REVIVA IRIS

Cod.	08217.001	composizione composition	100%PET (recyc.)
		altezza width	140 cm
		peso / weight (+/-5%)	800 g/m

TEST	Norma/method	Valori/Results	Scala/grade
Solidità dei colori / Colour fastness			
alle intemperie / to artificial weathering	EN ISO 105-B04	7	blu 1-8
allo sfregamento a secco/ to dry rubbing	EN ISO 105-X12	4/5	grigi 1-5
allo sfregamento a umido/ to wet rubbing	EN ISO 105-X12	4	grigi 1-5
all'acqua di mare / to saline water	EN ISO 105-E02	4-5	grigi 1-5
all'acqua clorata / to chlorinated water	EN ISO 105-E03	4-5	grigi 1-5
Calo / Shrinkage			
al lavaggio in lavatrice / to machine washing	EN ISO 6330	ordito / length ± 0	trama / width ± 0 %
Proprietà del tessuto/ Physical properties			
scorrimento dei fili sulle cuciture/seam slippage	EN ISO 13936-2	ordito / length 3	trama / width 2 mm
resistenza al pilling/pilling resistance	EN ISO 12945-2	4/5	
resistenza all'abrasione/abrasion resistance	EN ISO 12947-2	100.000	End point cicli / cycles

Reazione al fuoco / Reaction to fire - PASS

Classe 1 IM - UNI 9175

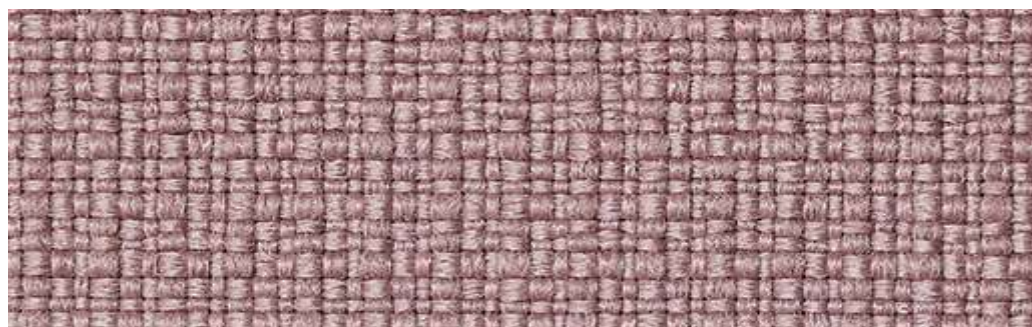
EN 1021-1+2

BS5852:2006 cig.+flame

California test (TB117 + AB2998)

IMO FTP Code 2010 - part 8

BS5852:2006 - Crib-5



<https://revivatextile.com/collections/>

CATEGORY B

norfolk



description

two-tonal upholstery fabric made from 100% recycled plastic waste, an all-over graphic grid with a three-dimensional effect

composition

100% recycled polyester FR

width

± 148 cm, ± 58 inches

weight

± 624 gr/m², ± 20 oz/yd²

flame retardancy

EN 1021/ 1-2

BS 5852, crib 5

NF D 60-013 (AM 18)

DIN 4102, B1

UNI 9175, classe 1.IM

Cal TB 117

NFPA 260, class 1

IMO 2010 FTP part 8

abrasion

ISO 12947-2

70.000 rubs martindale

ASTM D4157

100.000 double rubs wyzenbeek



<https://www.vescom.com/en/dessin/norfolk>

CATEGORY B

wilson



Crib 5

description

plain upholstery fabric made from 100% recycled plastic waste, a matte non-directional structure with a soft touch

composition

100% recycled polyester FR

width

± 150 cm, ± 59 inches

weight

± 771 gr/m², ± 25 oz/yd²

flame retardancy

EN 1021/ 1-2

BS 5852, crib 5

NF D 60-013 (AM 18)

DIN 4102, B1

UNI 9175, classe 1.IM

Cal TB 117

NFPA 260, class 1

IMO 2010 FTP part 8

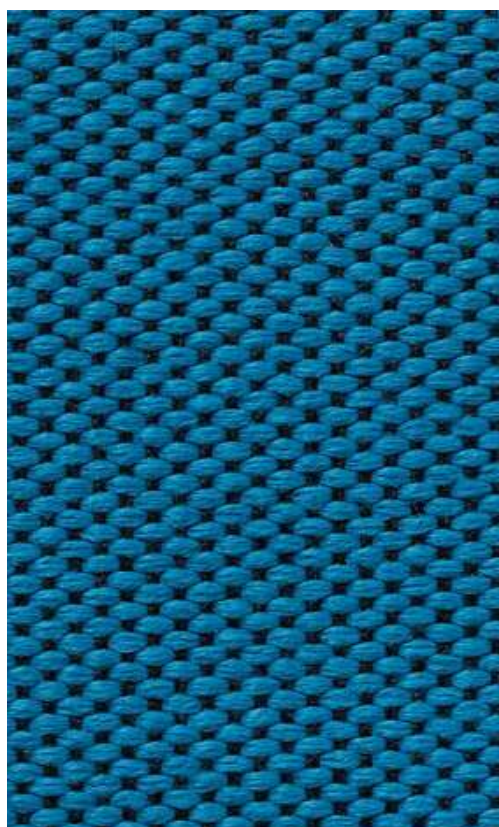
abrasion

ISO 12947-2

80.000 rubs martindale

ASTM D4157

100.000 double rubs wyzenbeek



<https://www.vescom.com/en/dessin/wilson>

REAL LAETHER

SOFT UNITO

Leather: BOVINE
Tanning: CHROMO
Dyeing: BARREL ANILINE

Dry rubbing – 500 cycles
(IUF 450)

Grey scale ≥ 4

Wet rubbing – 250 cycles
(IUF 450)

Grey scale ≥ 4

Grey scale $\geq 3/4$

Perspiration – 80 cycles
(IUF 470)

Newton/cm ≥ 2

Finish adhesion
(IUP 402)

blue scale ≥ 5

Colour fastness to light
(IUP 402)

Newton ≥ 20

tear resistance
(IUP 40)

No surface damage
or cracks ≥ 20.000

Flexing endurance –
50.000 cycles
(IUP 20)

Ph $\geq 3,2$



A solid color leather with a semi-glossy appearance.
The vast assortment of colors, which is renewed over
the years, accompanied by the classic Madras print,
makes this item one of the most versatile and refined.
Thickness 0.9 - 1.1 mm
Medium size 4.20 m2



<https://www.tipiesse.eu/soft-unito>

REAL LEATHER



DIN EN 1021-1 / -2
BS 5852 Source 0 / 1
IMO FTPC Part 8

Savoy

Composition Corrected and Embossed Bovine Leather

Thickness 0.9-1.0 mm

Size ~ 4,5-5,0 m2

Origin Europea Hides

Category **Contract, Natural Leathers, Upholstery**

Usage  

Treatment  

Care      



FLEXING ENDURANCE > 50.000



<https://www.mercis.si/product/savoy/>



Italian Designer Furniture since 1931

Accentò Srl

Via Palmarina 18, 33048 San Giovanni al Natissone Udine/Italy

Ph. +39 0432 746590 - Fax +39 0432 743183

info@accentosrl.it

www.accentosrl.it

Facebook - Instagram - Pinterest

